



GMT MONTHLY MEMBERSHIP PROGRESS REPORT

Results as of: 11/30/2023

Multiple District 30

LOCATION: MISSISSIPPI

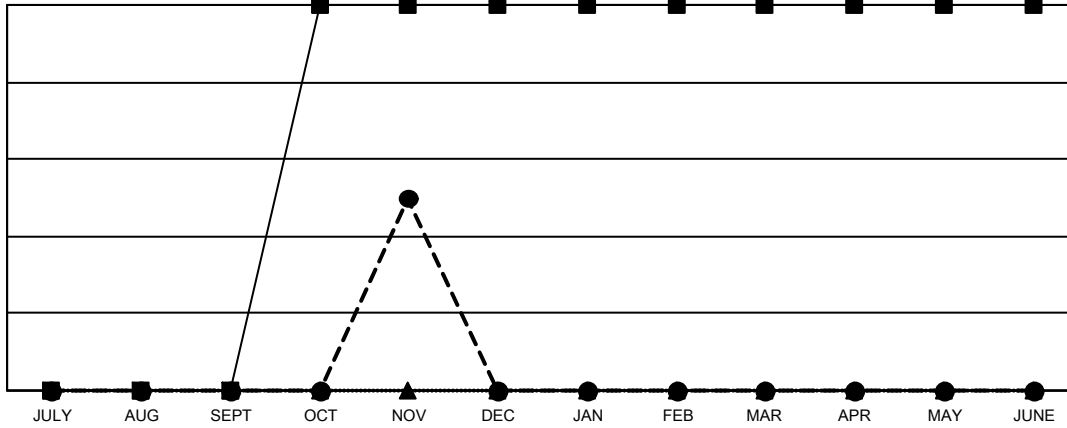
GMT: OPEN

GMT CA 1

Clubs			
RESULTS FOR 2023-2024			
QUARTER	NEW CLUB GOAL	NEW CLUBS	DROPPED CLUBS
JULY/AUG/SEPT	0	0	0
OCT/NOV/DEC	2	1	1
JAN/FEB/MAR	0	0	0
APR/MAY/JUNE	0	0	0

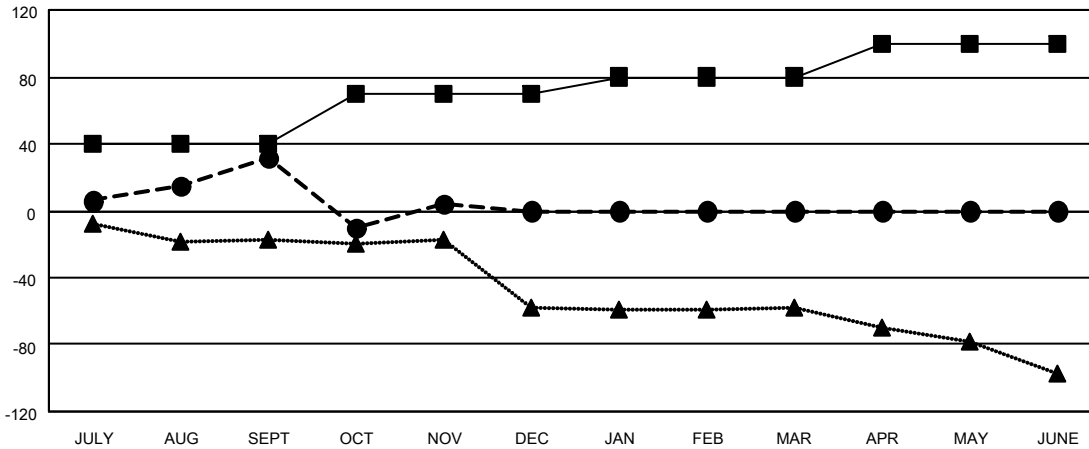
Members			
RESULTS FOR 2023-2024			
QUARTER	MEMBER GROWTH NET GOAL	MEMBER GROWTH ACTUAL	DROPPED MEMBERS ACTUAL (including transfers)
JULY/AUG/SEPT	40	63	26
OCT/NOV/DEC	30	43	56
JAN/FEB/MAR	10	0	0
APR/MAY/JUNE	20	0	0

GOALS AND ACTUAL NEW CLUBS CUMULATIVE



- - CURRENT YEAR GOALS FOR NEW CLUBS
- - CURRENT YEAR ACTUAL NEW CLUBS
- ▲ - LAST YEAR ACTUAL NEW CLUBS

GOALS AND ACTUAL MEMBERS CUMULATIVE



- - MEMBER GROWTH NET GOAL
- - MEMBER GROWTH ACTUAL
- ▲ - LAST YEAR MEMBERSHIP ACTUAL

DROPPED CLUBS: 1	25 CLUBS OF 83 ADDED 1 OR MORE NEW MEMBERS	GENDER DISTRIBUTION MALE 1,103 (70.34%) FEMALE 465 (29.66%)
DROPPED MEMBERS DECEASED 7 CLUB CANCELLED 0 OTHER 75 TOTAL 82	CLICK HERE FOR CUMULATIVE MEMBERSHIP DATA	TOTAL FAMILY UNIT MEMBERS 180 FAMILY MEMBERS PAYING HALF DUES 91